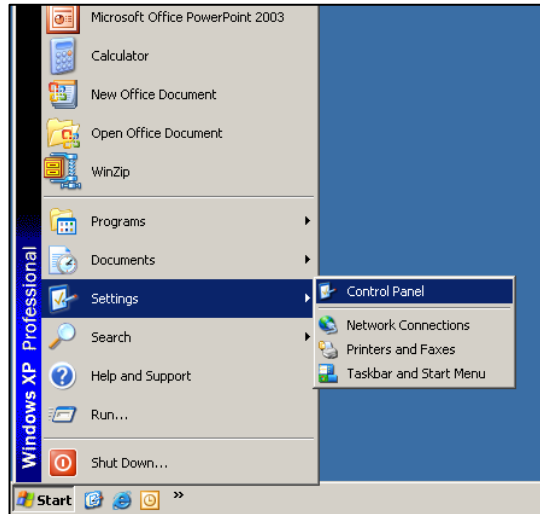


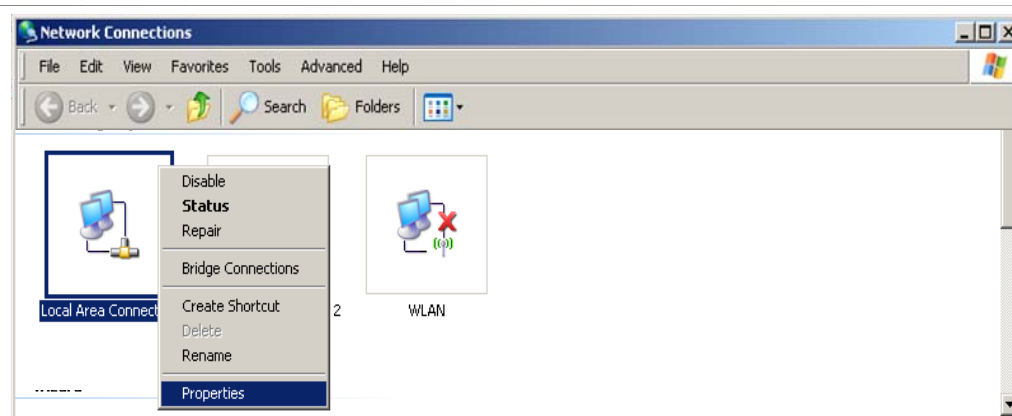
## How to Connect to the Internet – Static IP address Single Computer (PC)

Instructions for setting up your Allstream High-Speed Internet on a single computer (PC) with a Static IP address.

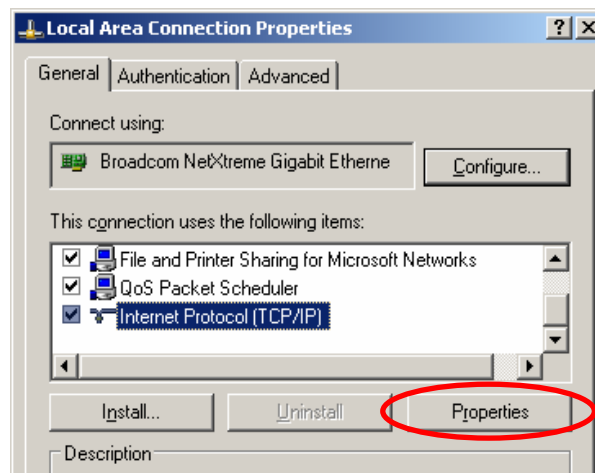
1. Click **Start**, locate **Settings**, and then choose **Network Connections**



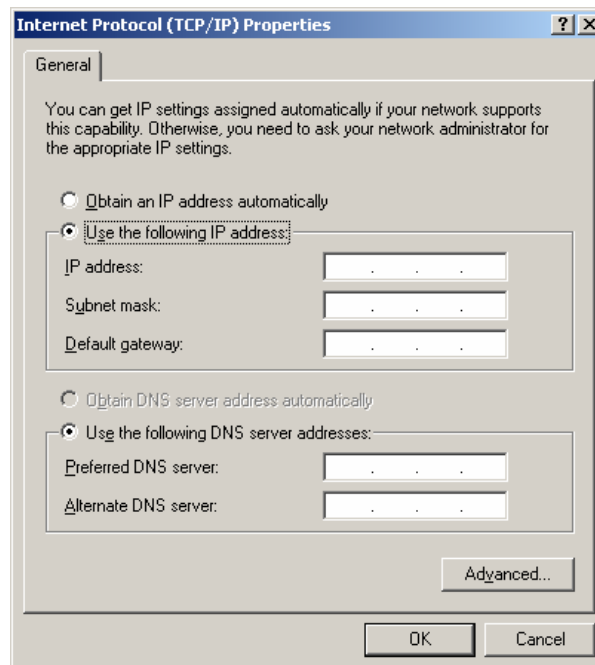
2. In the Network Connections window locate the **Local Area Connection** icon. Right click this icon and choose **Properties**.



### 3. Locate **Internet Protocol (TCP/IP)**. Choose **Properties**.



### 4. Confirm that “**Use the following IP address**” and “**Use the following DNS server address**” are selected.



5. Enter the information below into the corresponding fields. **NOTE:** This information is provided by the Allstream technician.

**IP Address:**            *(Provided by Allstream Technician)*

**Subnet Mask:**        *(Provided by Allstream Technician)*

**Default gateway:**   *(Provided by Allstream Technician)*

**Preferred DNS server:**   *(Provided by Allstream Technician)*

**Alternate DNS server:**   *(Provided by Allstream Technician)*

6. Once step 5 is complete, click **OK**
7. Restart the computer
8. Open Internet Explorer. Go to **[www.allstream.com/smallbusiness](http://www.allstream.com/smallbusiness)**.  
If you cannot connect to the Internet please contact us at **1-877-663-2791**.